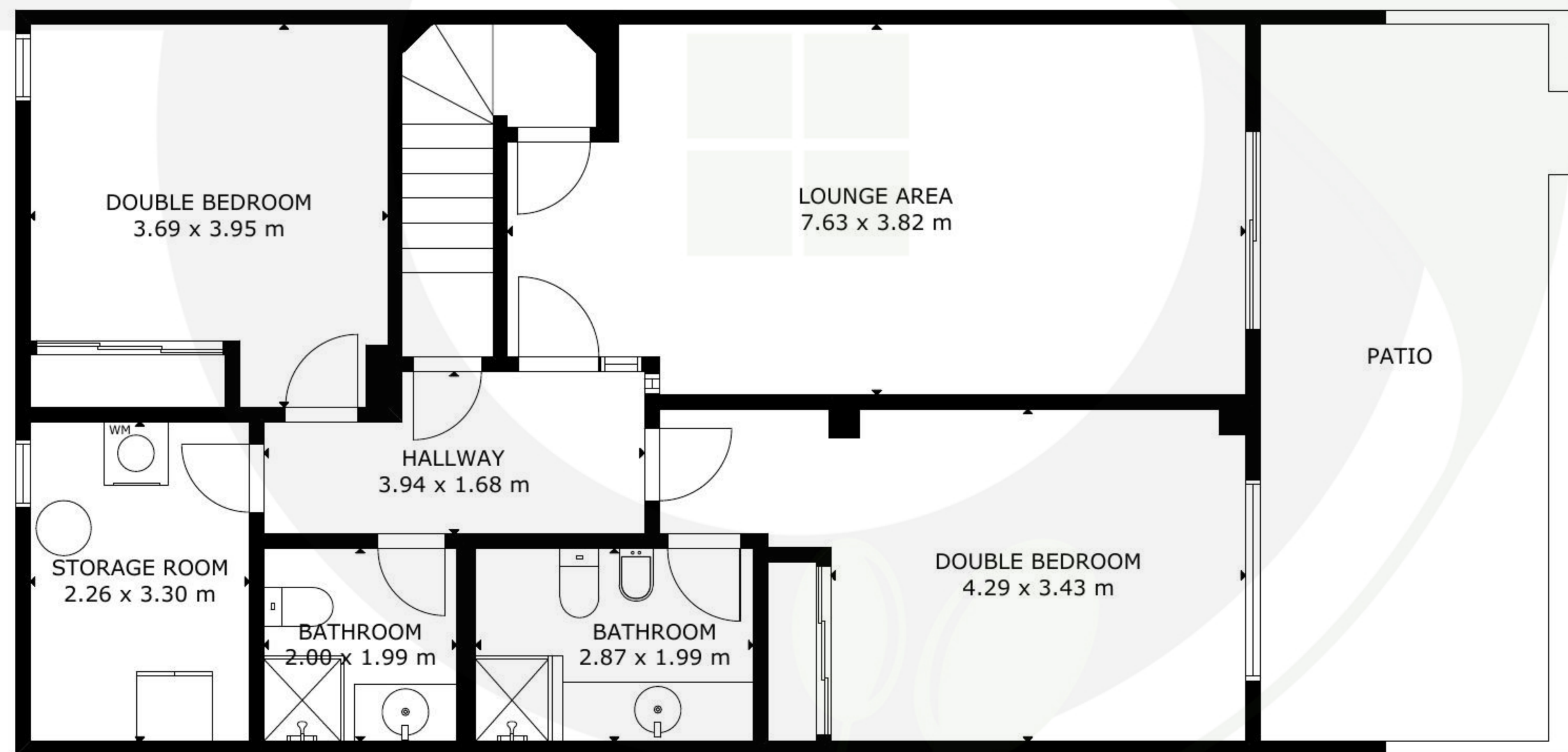


GROUND FLOOR



BASEMENT

GROSS INTERNAL AREA  
 TOTAL: 184 m<sup>2</sup>  
 BASEMENT: 93 m<sup>2</sup>, GROUND FLOOR: 91 m<sup>2</sup>

Please Note. Whilst every attempt has been made to ensure the accuracy of the floor plan contained here, measurements of doors, windows, rooms and any other items are approximate and no responsibility is taken for any error, omission, or misstatement.

This plan is for illustrative purposes only and should only be used as such by any prospective purchaser.



**OLIVE HOMES**  
 PORTUGAL PROPERTY  
 Property Ref  
**OH2707**

Azeitona Lares - Soc Med Imob Lda  
 Edif. Al-Sakia, lote LHM10, R/C, EP12,  
 Fonte Santa, 8125-020,  
 Quarteira, Algarve, Portugal.  
 info@olivehomes.com  
 +351 289103471 +351 917474777  
(Chamada para rede fixe nacional) (Chamada para rede móvel nacional)